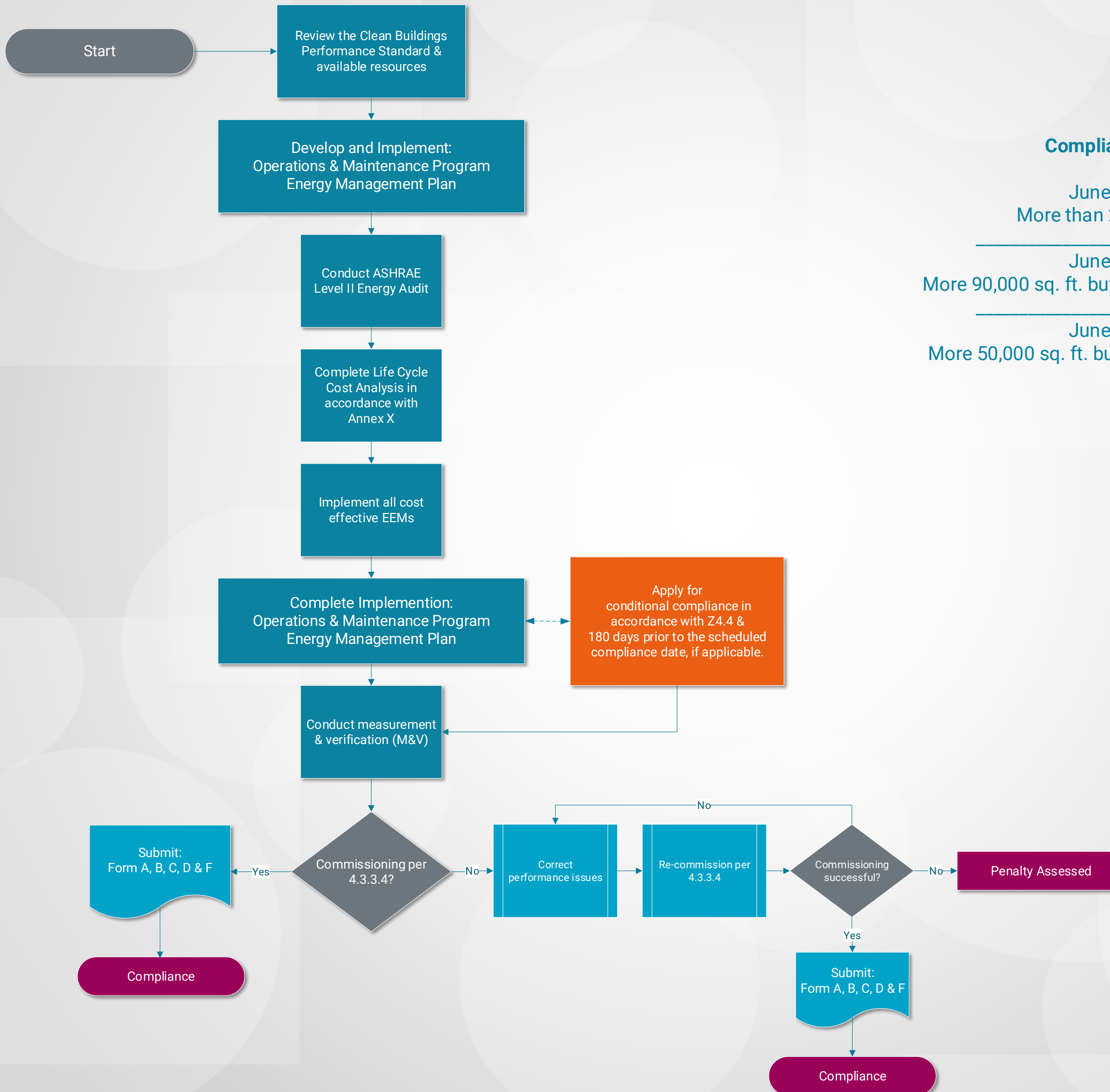


Investment Criteria Path for Buildings without Measureable EUI

CLEAN BUILDINGS PERFORMANCE STANDARD



Compliance Dates

June 1, 2026
More than 220,000 sq. ft.

June 1, 2027
More 90,000 sq. ft. but less than 220,001 sq. ft.

June 1, 2028
More 50,000 sq. ft. but less than 90,001 sq. ft.



Washington State
Department of
Commerce