

Establishing EUI Targets for HB 1257 Commercial Building Energy Performance Standard

December 10, 2019

Presented at: Clean Buildings Workshop

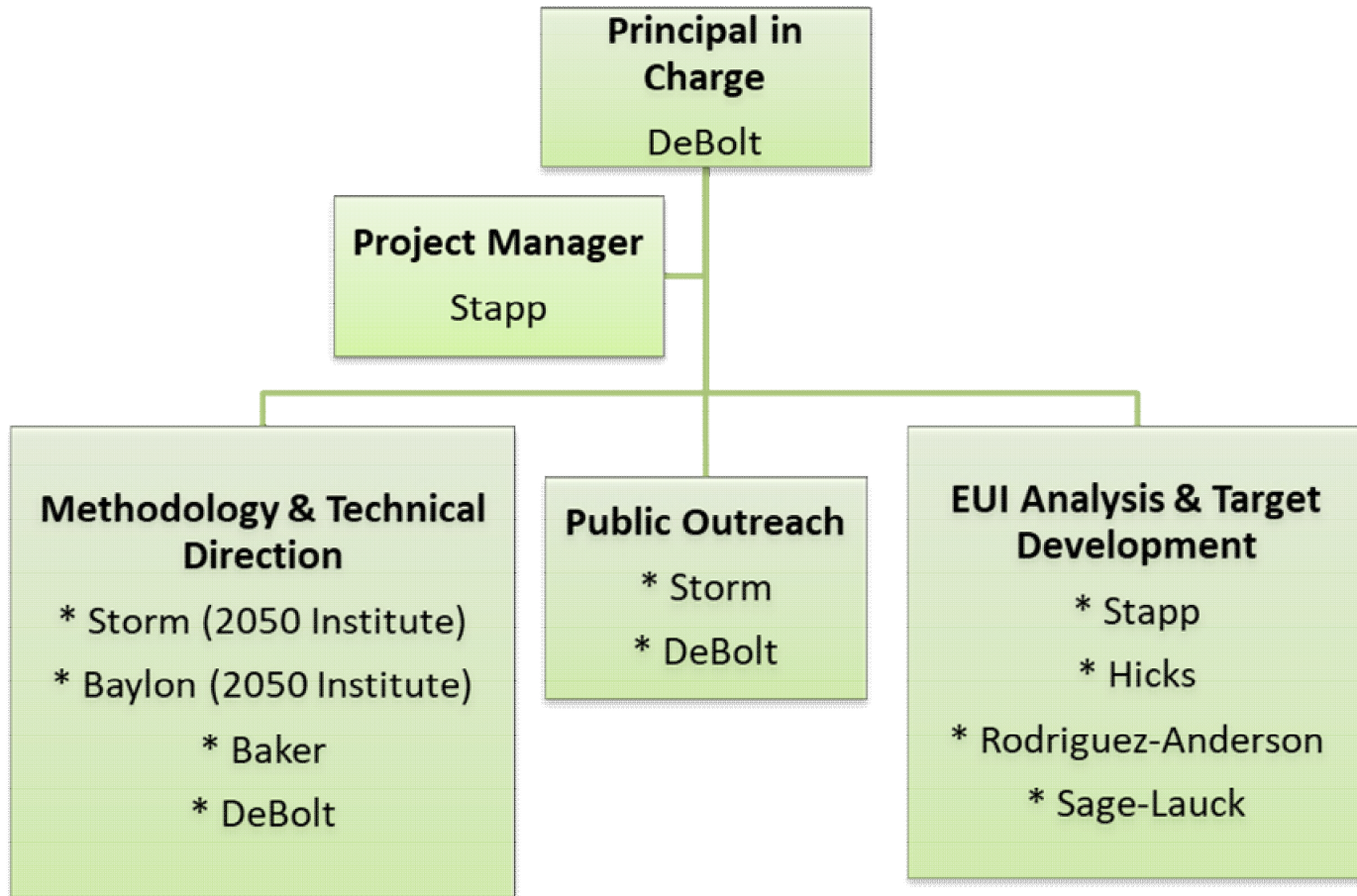
Prepared by: **SBW Consulting Team**

Agenda:

- Team Introduction
- Methodology Goals
- EUI Target Development Process
- EUI Targets Criteria
- Technical Assumptions
- Next Steps for Public Input



Team Introduction



Methodology Goals

- EUI targets that:
 - Meet HB 1257 requirements
 - Use ASHRAE Standard 100 as the initial model for the targets
 - Leverage regional data and expertise
- Clear target setting criteria
- Well-documented assumptions
- Transparent and collaborative process

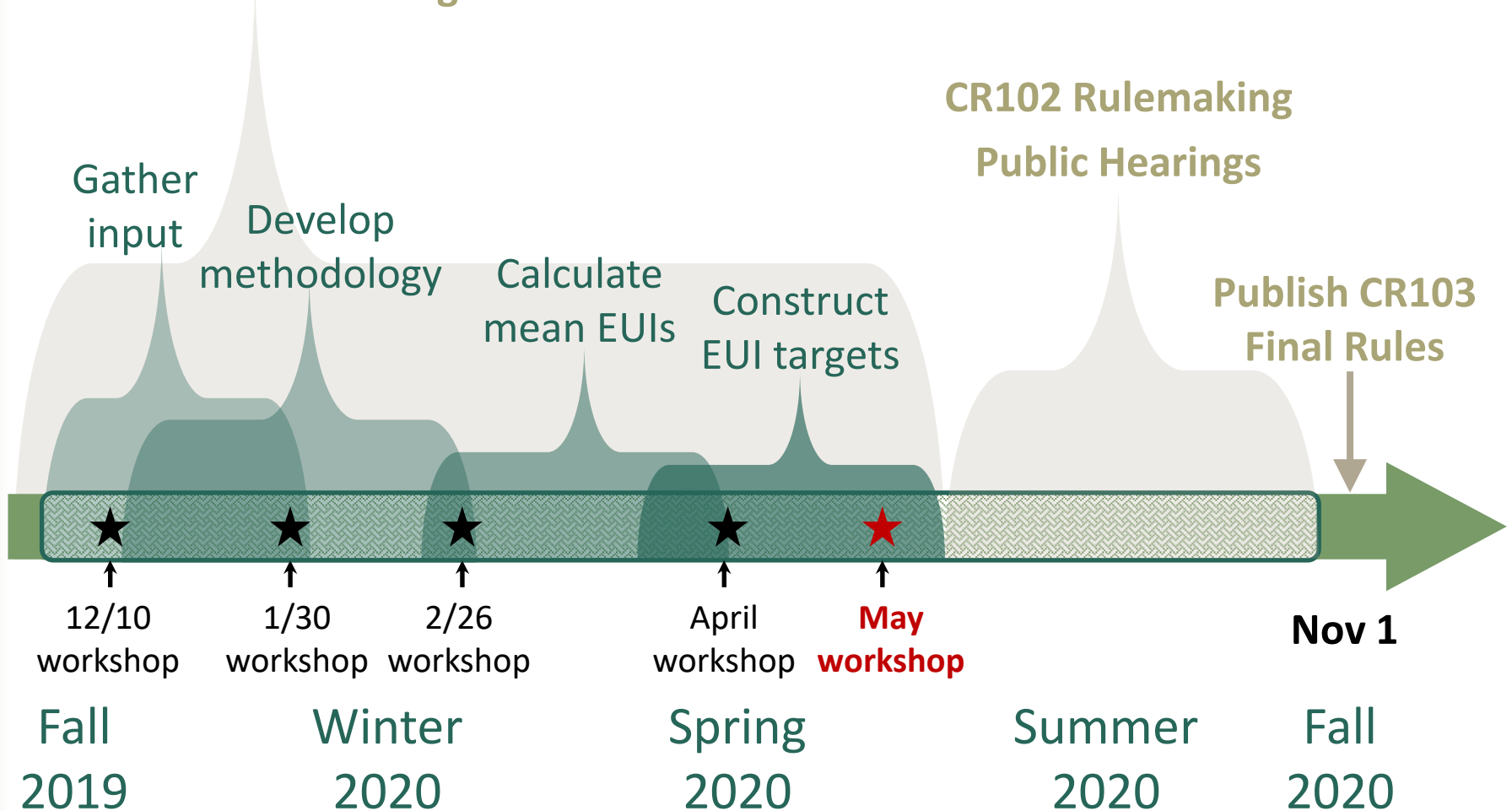
EUI Target Development Process

CR101 Pre-rulemaking

CR102 Rulemaking

Public Hearings

Publish CR103 Final Rules



EUI Targets Criteria Discussion: Scale, Pace, & Context

From HB1257 & Std 100

- Must be less than or equal to mean EUIs ✓
- Maximize GHG reductions ✓
- Updates every 5 years ✓
- Conditioning factors:
 - Mixed use ✓
 - Normalizations ✓
 - Cost effectiveness ✓
 - Conditional compliance ✓

Need detailed criteria to define success:

- Maximize GHG reductions
- Utility Programs and Certifications
- Market readiness
- Equity
- Other?



Technical Assumptions Discussion

- **Data sources**
- Building types
- Metrics
- Independent variables and normalizations
- Unique features?
- New construction targets?
- Other?



Input on Mean EUI Data Sources

- National Commercial Building Energy Consumption Survey (CBECS)
- Regional Commercial Building Stock Assessments (CBSA) and Residential Building Stock Assessments (RBSA)
- City of Seattle and Portland benchmarking data and reports

Next Steps for Public Input

CR101 Pre-rulemaking

CR102 Rulemaking

Public Hearings

Publish CR103 Final Rules

