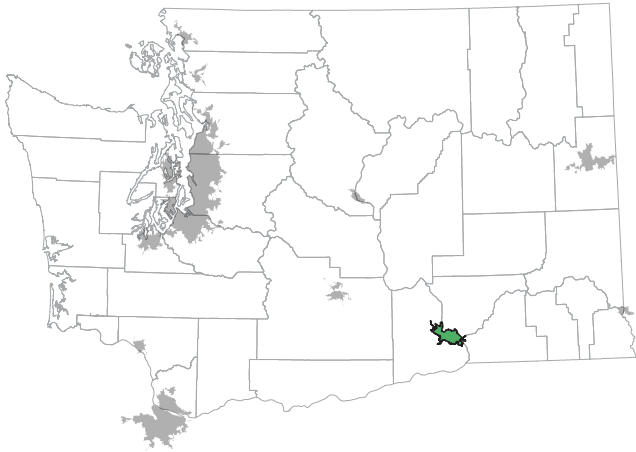


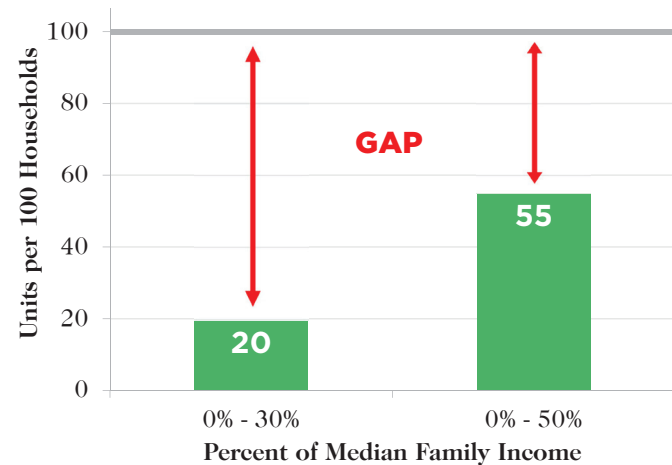
# KENNEWICK-PASCO AREA



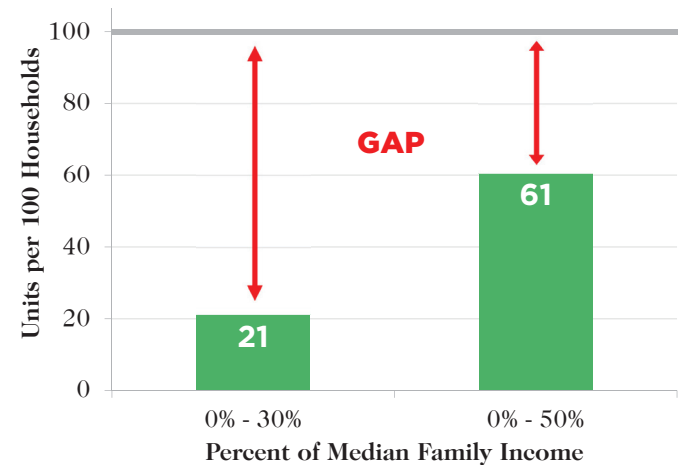
- Population: 211,515
- Area: 110 miles<sup>2</sup>
- Households: 73,849
- Median Family Income: \$66,800
- Low-income Renter Households: 14,674
- Subsidized Housing Units: 3,197

## Affordable Housing Gap

Affordable and Available Housing Units for Every 100 Households



Forecasted Affordable and Available Housing Units for Every 100 Households in 2019

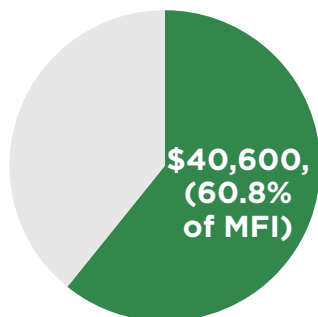


## Housing Market

How Much of the Median Family Income (MFI) Must a Household Earn to Afford Rent?

**4 people / 3 bedrooms**

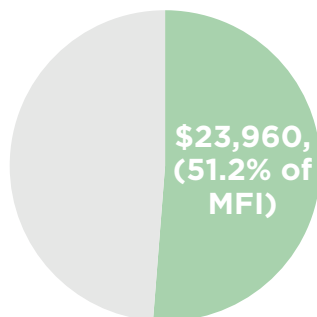
Fair Market Rent: \$1,015



■ required income

**1 person / 1 bedroom**

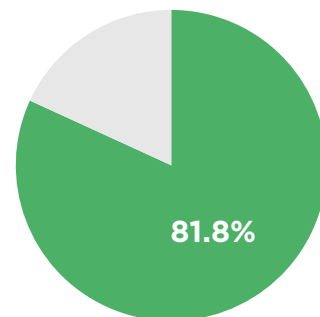
Fair Market Rent: \$599



■ required income

How Much of the Housing Stock Can the Median Family Income Afford to Buy?

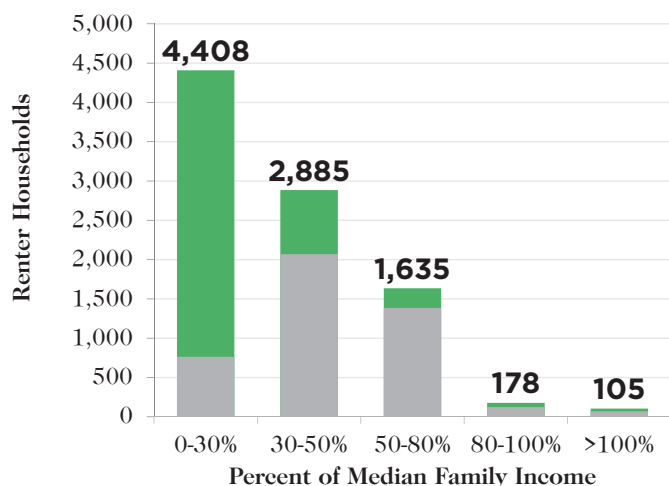
Maximum Affordable Home Value: \$264,599



■ % of owner-occupied homes that are affordable

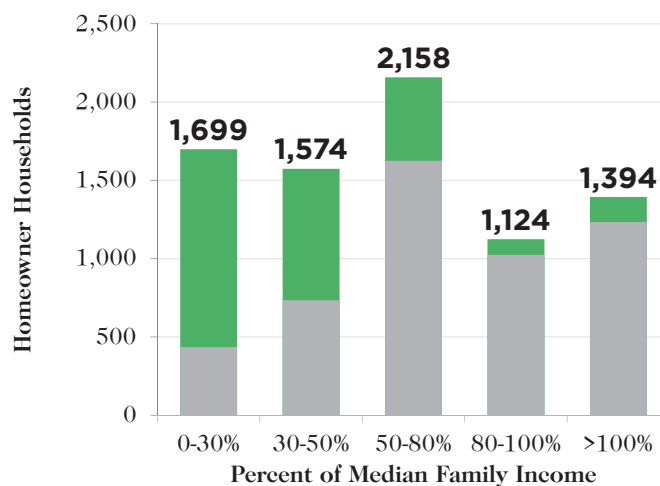
## Cost Burden

### Cost-Burdened **Renter** Households



■ Severely cost-burdened renter households  
 ■ Cost-burdened renter households

### Cost-Burdened **Homeowner** Households

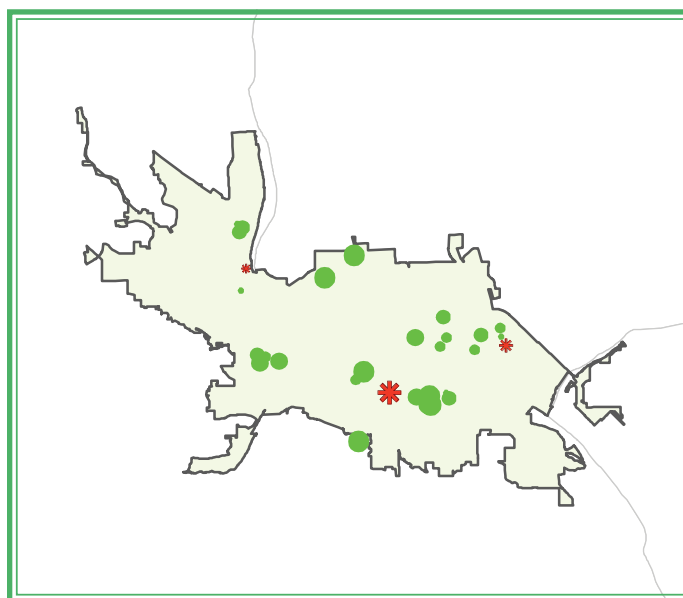


■ Severely cost-burdened homeowner households  
 ■ Cost-burdened homeowner households

## Subsidized Housing Inventory

### Subsidized Housing Units, Including Those That Are Scheduled to Expire by 2017

- Subsidized unit
- \* Expiring Section 8 or Section 515 unit
- 25 or fewer units
- 26-50
- 51-100
- 101-150
- 151 or more units



### Subsidized Inventory Characteristics

- 🏠 Sites: 39
- 🔑 Units: 3,197
- 🕒 Section 8/Section 515 units set to expire by 2017: 174

### Are There Enough Subsidized Units for Eligible Renter Households at Different Income Thresholds?

| % of Median Family Income | Renter Households | Subsidized Units for Which They Are Eligible* |        | Units per 100 Households |
|---------------------------|-------------------|-----------------------------------------------|--------|--------------------------|
|                           |                   | #                                             | %      |                          |
| 0% - 30%                  | 5,424             | 2,830                                         | 100.0% | 52                       |
| 30% - 50%                 | 4,480             | 1,883                                         | 66.5%  | 42                       |
| 50% - 80%                 | 4,770             | 0                                             | 0.0%   | 0                        |
| 80% - 100%                | 1,654             | 0                                             | 0.0%   | 0                        |

\* Income eligibility was not available for all units in the inventory