

Natural Gas in Transportation



*PUGET
SOUND
ENERGY*

CNG Stations In Washington

The screenshot displays the 'Alternative Fuels Data Center' website. The header includes the U.S. Department of Energy logo and navigation links. The main content area is titled 'Alternative Fueling Station Locator' and features a search bar with the text 'Compressed Natural Gas' and a 'Go' button. Below the search bar, it states '1,516 CNG stations in the United States' and 'Including private stations'. A map of Washington state is shown on the right, with various cities labeled. The bottom of the page has links for 'Go to mobile version', 'Download iPhone app', 'Download Data', and 'Developer APIs'. The taskbar at the bottom shows various application icons and the system clock indicating 6:31 PM on 2/12/2015.

U.S. DEPARTMENT OF ENERGY | Energy Efficiency & Renewable Energy

EERE Home | Programs & Offices | Consumer Information

Alternative Fuels Data Center

Alternative Fuels Data Center
SEARCH
Search Help

FUELS & VEHICLES | CONSERVE FUEL | **LOCATE STATIONS** | LAWS & INCENTIVES | Maps & Data | Case Studies | Publications | Tools | About | Home

EERE » AFDC » Locate Stations [Printable Version](#) [Share](#)

Alternative Fueling Station Locator

Find alternative fueling stations near an address or ZIP code or along a route in the United States. Enter a state to see a station count.

Find Stations | Plan a Route

Go

Compressed Natural Gas

[more search options](#)

1,516
CNG stations
in the United States
Including private stations

Location details are subject to change. We recommend calling the stations to verify location, hours of operation, and access.

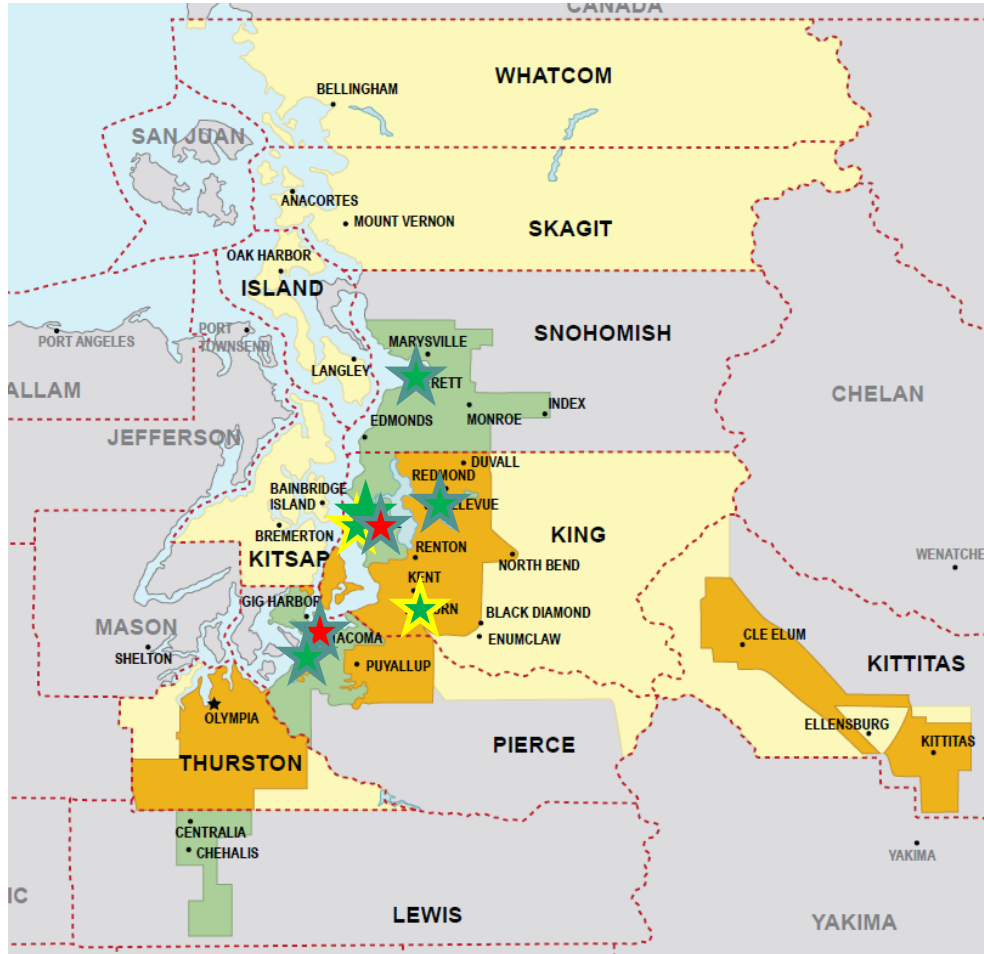
[ABOUT THE DATA](#)

[Go to mobile version](#)
[Download iPhone app](#)

[Download Data](#) [Developer APIs](#)

Map data ©2015 Google Terms of Use

CNG Stations Supporting PSE Operations



- ★ PSE (Private)
- ★ Clean Energy (Public)
- ★ Waste Management (Private & Public)

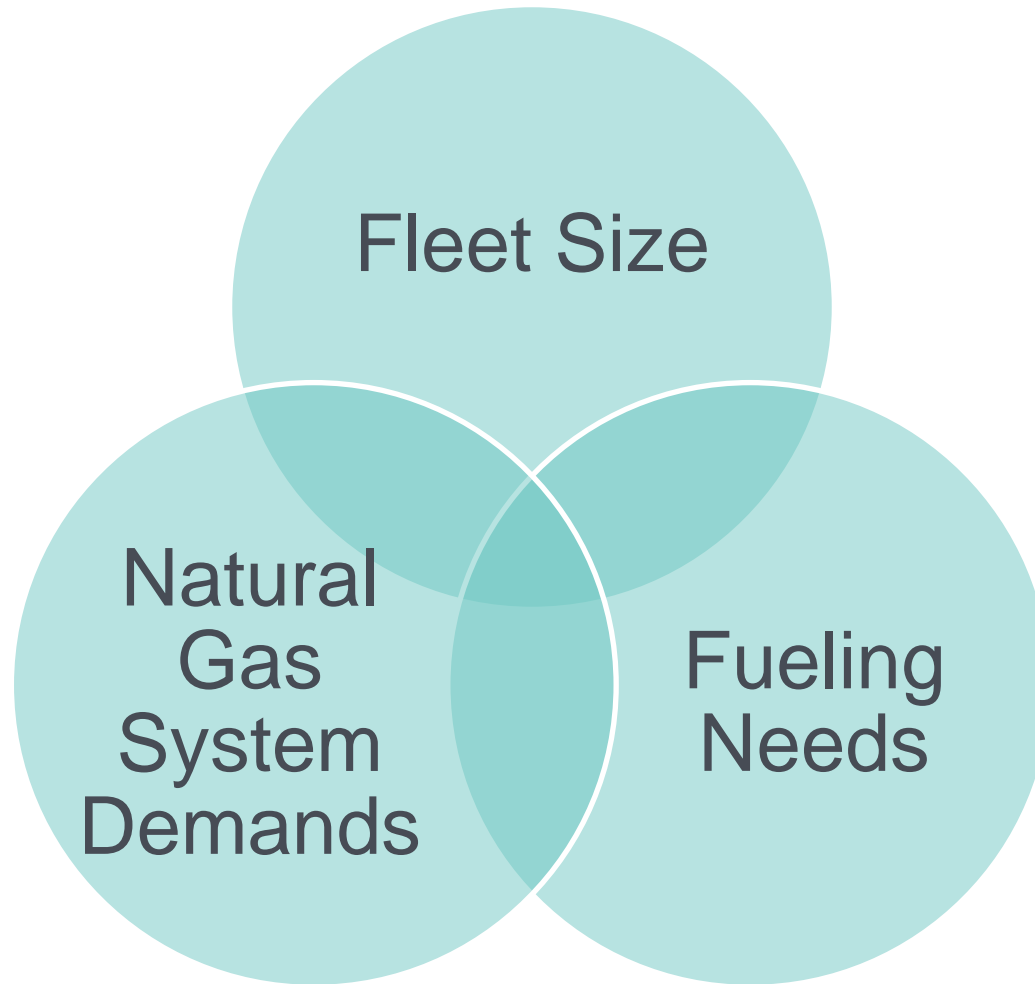
PSE Fleet



Renewable Natural Gas

- 13.3 million GGE/year of biogas produced for pipeline in PSE service territory today (Cedar Hills, King County Metro)
- Pierce Transit using today
- Development projects ongoing for other sources (landfill, digester, wastewater plant)

Factors in Siting CNG

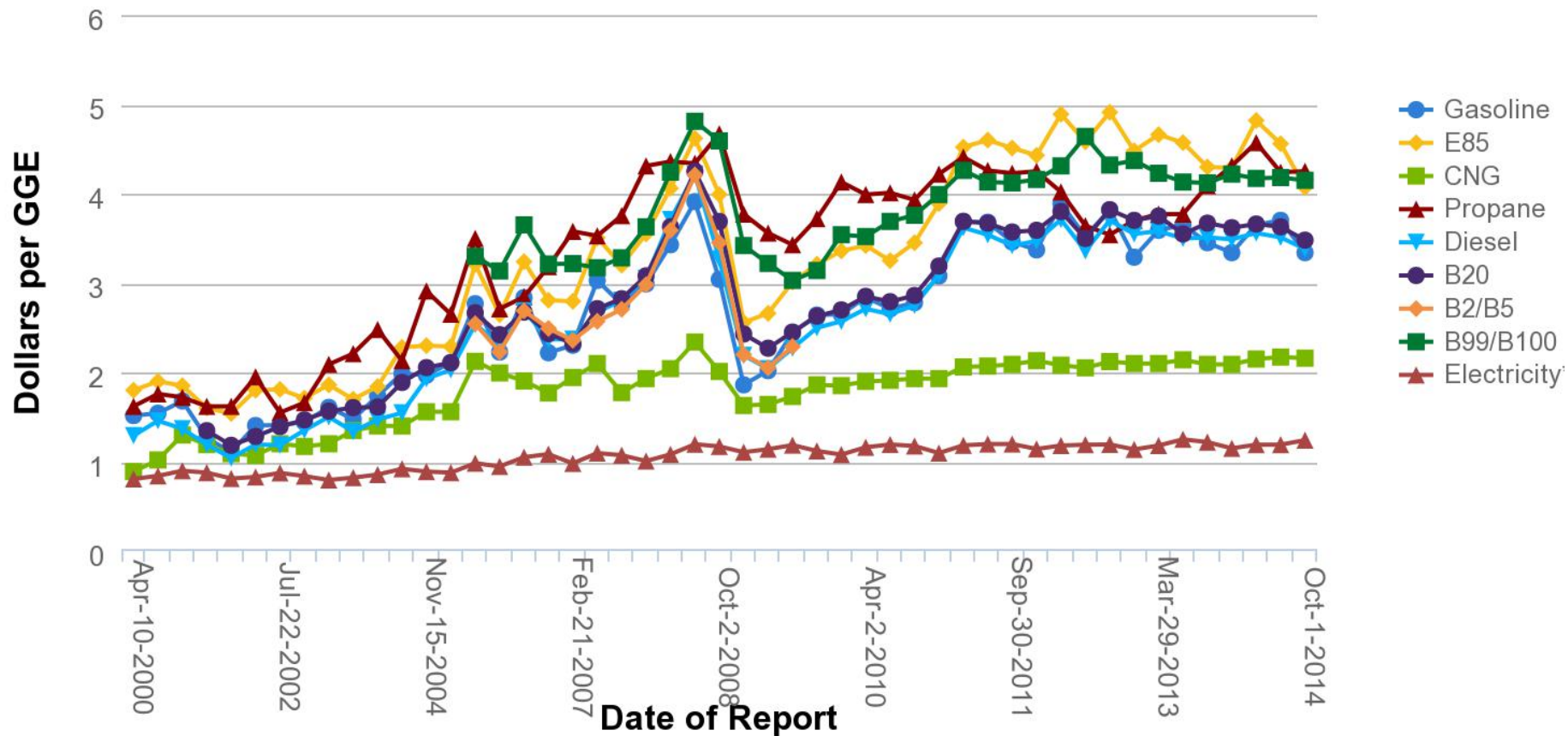


PSE's Schedule 54

- Site-specific rate based on fueling equipment needs
- Provides natural gas compression and fueling equipment and maintenance
- Available on a volume (per gallon) rate to facilitate fleet phase-in or on fixed monthly payment basis
- Can use PSE sales service gas or purchase gas from 3rd-party provider

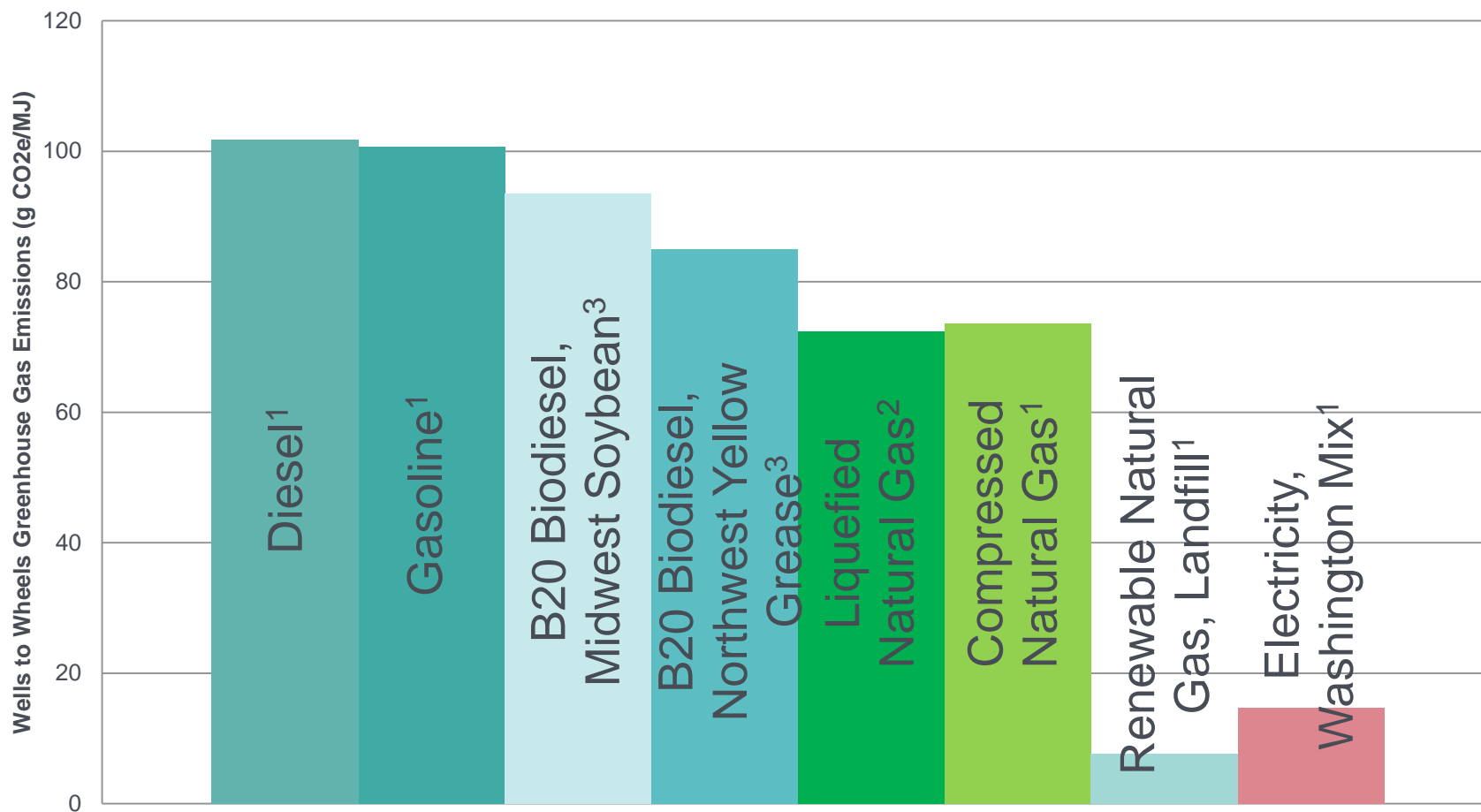
Fuel Price History

Average Retail Fuel Prices in the U.S.



Emissions

Wells to Wheels Fuel Carbon Comparison



Contact Info

Ben Farrow

Manager, Development

P: 425.456.2541

E: benjamin.farrow@pse.com