

Budget Activity: E A049 - State Energy Policy Analysis

Purpose: E A049 Key source of policy support, analysis, and information for the Governor, Legislature, CTED, and other energy decision makers.

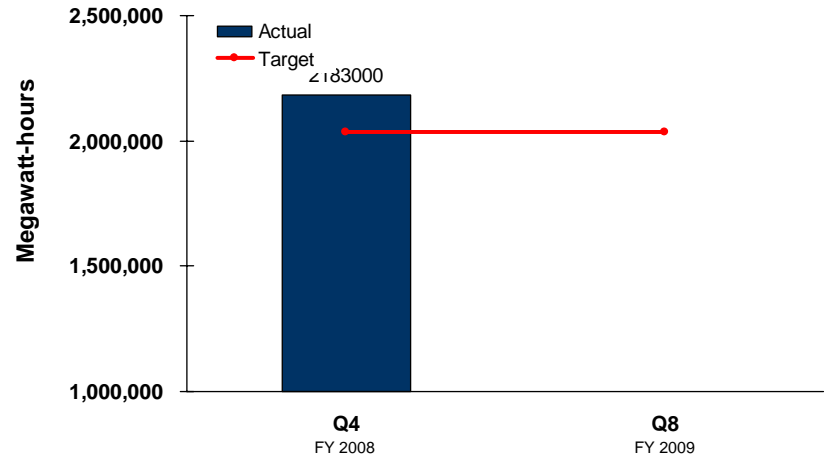
Agency Goal: Build livable, vibrant communities that meet the economic, environmental, and social needs of citizens

Priority of Government: Improve the quality of Washington's natural resources

Analysis: The state has seen significant increase in renewable energy production. Energy policy has assisted this growth through policies including- sales tax exemption, net metering, adoption of rules for Initiative 937, direct assistance to renewable energy businesses.

This is an annual (not a quarterly) performance measure. Two million megawatt hours is the annual amount of non-hydro renewable energy use. We currently have information for CY 2005. The actual total was 2,183,000 MWh which was an increase of 600,000 over 2004.

P001 - Increase the amount of the state's electricity generated by non-hydroelectric renewable energy sources (total production in megawatt-hours of energy).



Action Plan

Who

Timeframe

Complete I-937 Rules

Howard Schwartz

March 08 /Completed

Collect and Analyze Data on Renewable Energy

Stacey Waterman-Hoy's replacement

Annually

How target was set: Historical usage

Data Source: US Dept. of Energy – Energy Information Administration, Renewable Energy Annual Report

Budget Activity: E A046 Energy Economic Development and Contract Management

Purpose: Promote the state and its businesses in the global and domestic marketplace by actively supporting the development and expansion of renewable energy, energy efficiency, fuel cell, and related industries.

Agency Goal: Build livable, vibrant communities that meet the economic, environmental, and social needs of citizens

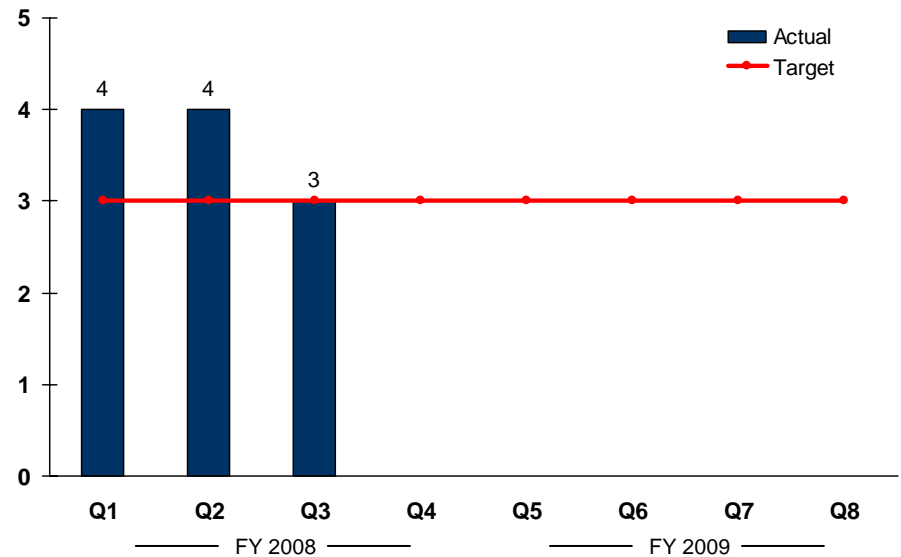
Priority of Government: Improve the quality of Washington's natural resources

Analysis:

Clean energy development in Washington State has become a significant priority. New technologies, high oil prices, climate change and population growth have forced us to diversify our energy supply and approach to energy development. The digitization of the grid, a commitment to build renewable energy and familiarity with building projects is driving wind development. High performance buildings are in increased demand because they are better places to work and make increasing economic sense.

The tools to expand this sector are improving as familiarity is growing and investors recognize the opportunity locally and worldwide.

P002 - Number of clean energy businesses recruited, retained or expanded per quarter (outcome)



Action Plan

Who

Timeframe

Connect entrepreneurs with investors monthly

Tim Stearns – Energy Angels

monthly through the year

Trade promotion to targeted shows

Tim Stearns – trade staff - allies

quarterly

Location leads for companies looking to expand

Tim Stearns – eco development

monthly

How target was set: Targets are set by experience and capacity. It takes 3 months to pull off an outgoing trade activity.

Data Source: Experience with allies.

Allotments vs Expenditures (YET) - 3rd Quarter FY 2008

500 – Energy

Subprogram Title	Biennium Dollars Allotted	Allotted Dollars YTD	Expenditures YTD	Variance YTD	Variance %
Energy Policy	5,543,126	2,484,755	1,703,789	780,966	31.43%
Division Totals	5,543,126	2,484,755	1,703,789	780,966	31.43%

The Energy Policy variance is due primarily to under-spending on federal allotments; sub-grant billings run behind actual expenditures and we have just received some of the grants. Estimates at the time of budget development are based on past grant receipts. However, most of the grants are competitive and the timing of dollar amounts varies each budget cycle. FTE expenditures are low because one staff person left earlier this year and we have recently hired her replacement.

FTE Usage (YTD)

Subprogram Title	Biennium Staff Months Allotted	Allotted Staff Months YTD	Actual Staff Months YTD	Variance YTD	Variance %
Energy Policy	207.6	53.1	47.58	5.52	10.40%
Division Totals	207.6	53.1	47.58	5.52	10.40%